



# ROBIN

## Tech Note

Version: 1.0.3 ENG  
Datum: 7-06-2018

**How-To:  
Connect the Robin to MS Lync**

## About this Tech Note

This Tech Note is meant for the following Robin products::

- C03060 - C03067 : Proline SIP
- C03050 - C03058 : Proline SV
- C03071 - C03074 : Proline Classic SV
- C01060 - C01068 : Compact SIP
- C02050 - C02058 : Compact SV

**Software release 3.5.1 and higher**

## MS Lync / Skype for Business

The Robin SmartView (SV) and Robin SIP can be used in a MS Lync / Skype for Business environment.

This Tech Note describes the configuration of the Robin to function with MS Lync and contains limited descriptions of two MS Lync configurations.

### Limitations of the Robin when used with MS Lync

The following limitations apply when the Robin is connected to an MS Lync environment:

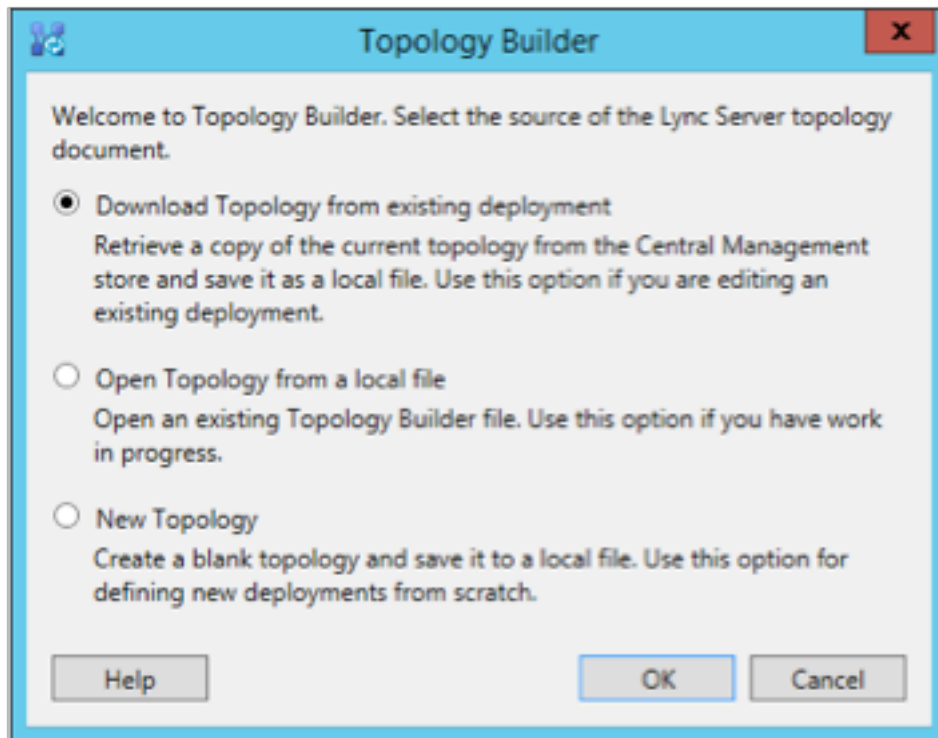
- The Robin has to be connected to MS Lync via a Trunk connection. It can not be connected as a regular MS Lync certified phone
- When a Robin SV (with camera) is used, video will not be displayed on a H.264 video compatible phone connected to the MS Lync server. The video will be accessible through a compatible web browser or a Video Management System.

## Configuration 1 - Basic Lync setup

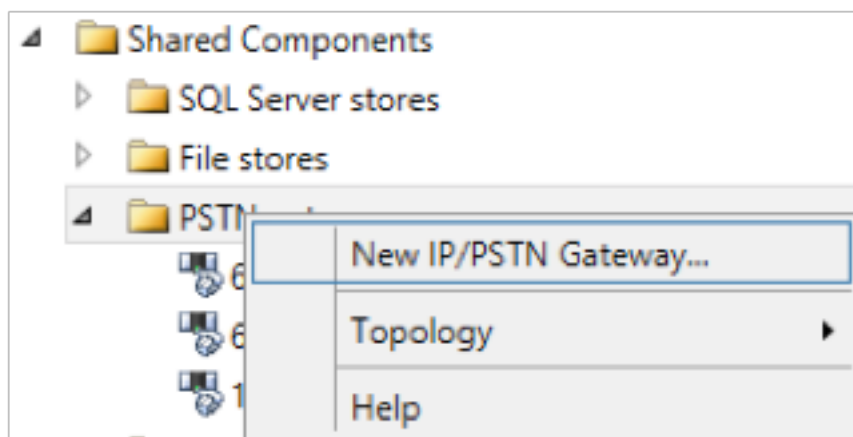
### Lync configuration

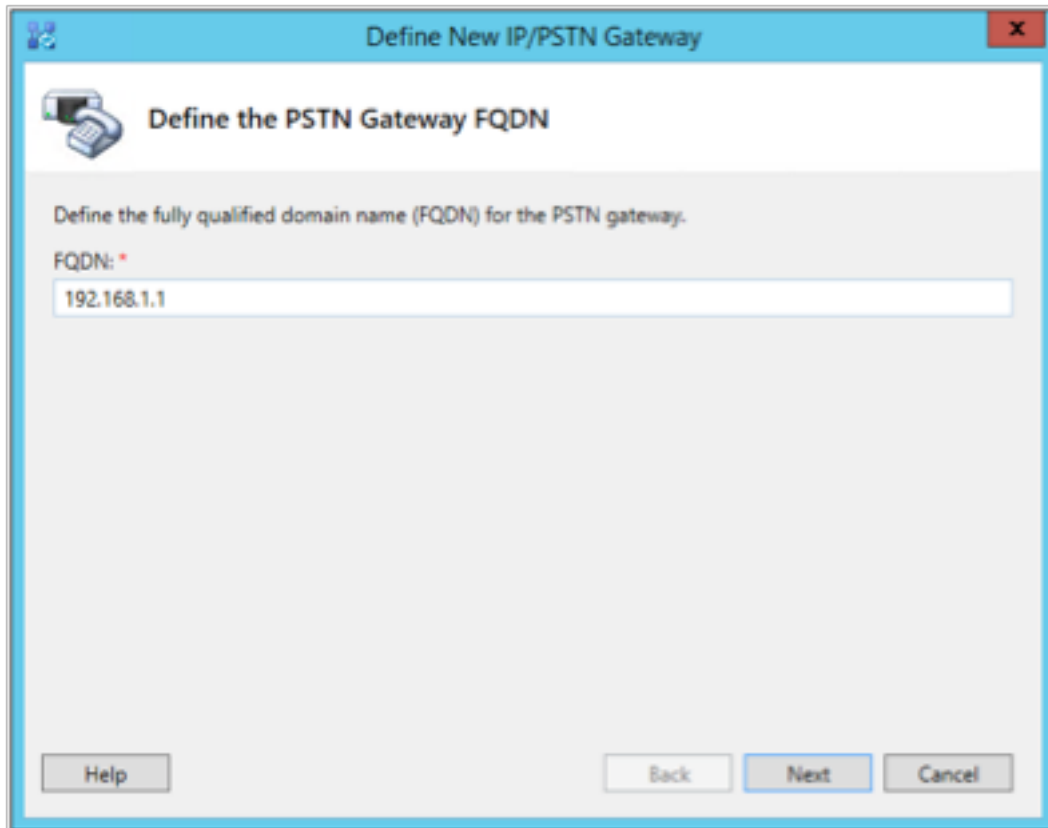
#### Lync Topology

1. Open the Topology Builder and select 'Download Topology from existing deployment'. Save this file.



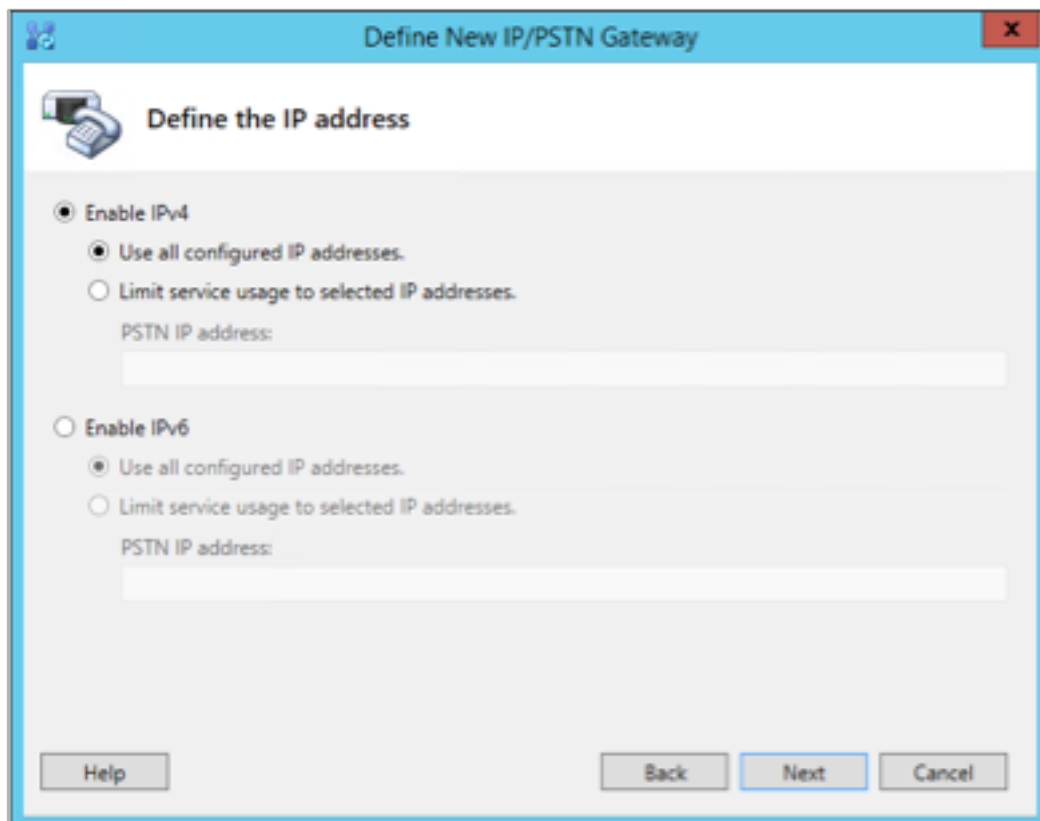
2. In the Topology builder, unfold 'Shared Components' right-click on 'PSTN gateways', select: 'New IP/PSTN gateway'.





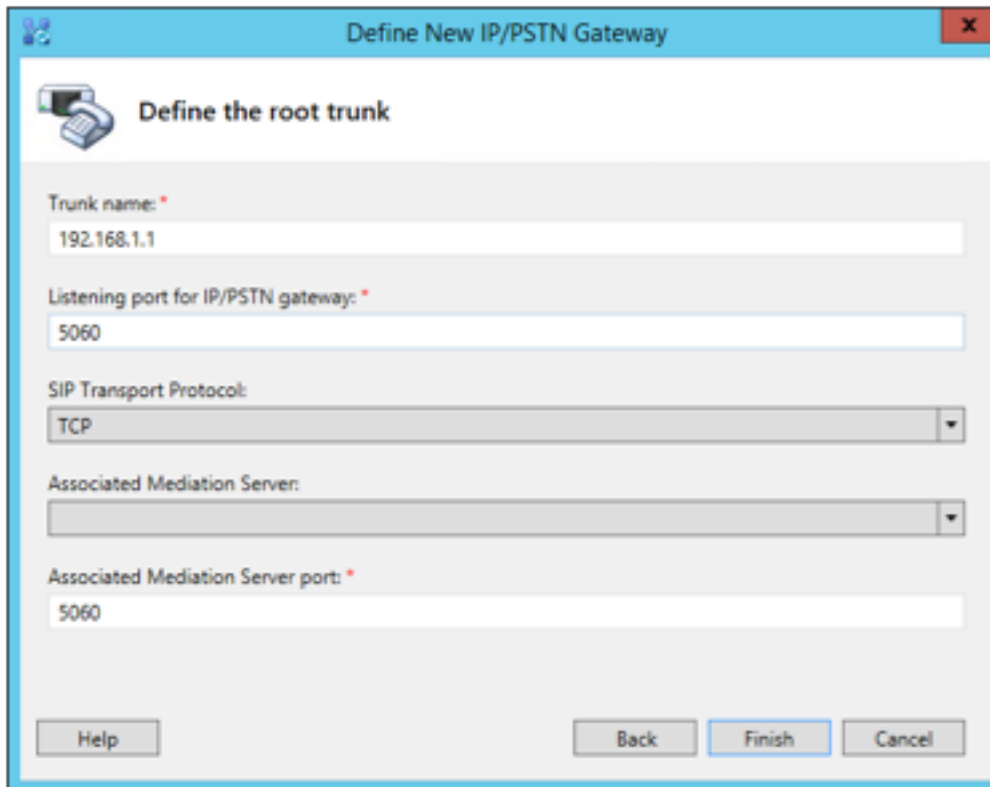
The screenshot shows a window titled "Define New IP/PSTN Gateway" with a close button (X) in the top right corner. The main heading is "Define the PSTN Gateway FQDN" with a printer icon to the left. Below the heading, the text reads "Define the fully qualified domain name (FQDN) for the PSTN gateway." There is a label "FQDN: \*" followed by a text input field containing "192.168.1.1". At the bottom of the window, there are four buttons: "Help", "Back", "Next" (highlighted with a blue border), and "Cancel".

3. In the next screen, stick to the default settings and click on 'Next'.



The screenshot shows a window titled "Define New IP/PSTN Gateway" with a close button (X) in the top right corner. The main heading is "Define the IP address" with a printer icon to the left. Below the heading, there are two radio button options: "Enable IPv4" and "Enable IPv6". Under "Enable IPv4", there are two sub-options: "Use all configured IP addresses." (selected) and "Limit service usage to selected IP addresses." Below this is a text input field labeled "PSTN IP address:". The "Enable IPv6" section has the same sub-options and input field. At the bottom of the window, there are four buttons: "Help", "Back", "Next" (highlighted with a blue border), and "Cancel".

4. In the next screen, use the following settings:
- Trunkname: IP address of the Robin
  - Listening port for the IP/PSTN gateway: 5060
  - Sip Transport Protocol: TCP
  - Associated Mediation server: Mediation server/pool (When using co-located mediation services, choose the front-end server/pool)
  - Associated Mediation Server port: 5060



Define New IP/PSTN Gateway

Define the root trunk

Trunk name: \*

192.168.1.1

Listening port for IP/PSTN gateway: \*

5060

SIP Transport Protocol:

TCP

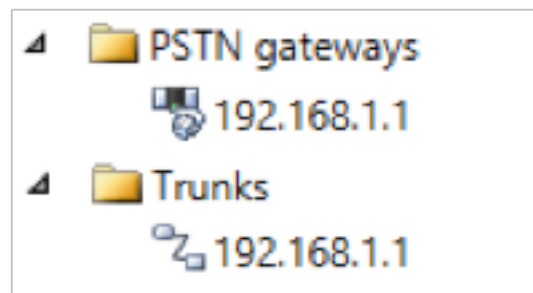
Associated Mediation Server:

Associated Mediation Server port: \*

5060

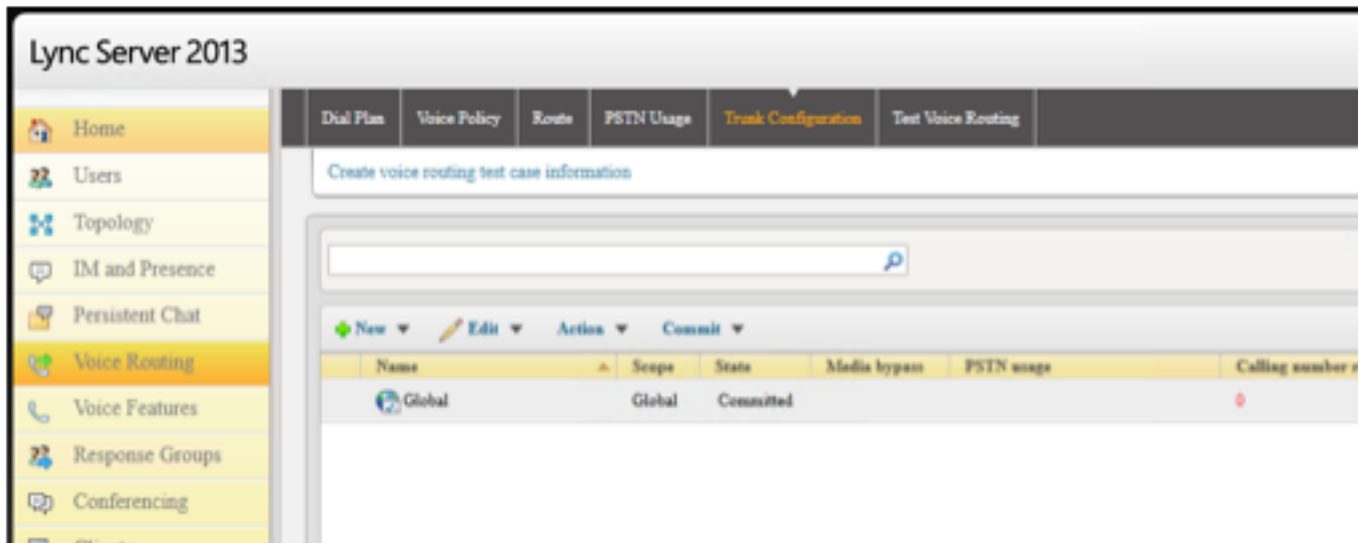
Help Back Finish Cancel

5. Click 'Finish'. The config is stored in the topology, next: publish the Topology.

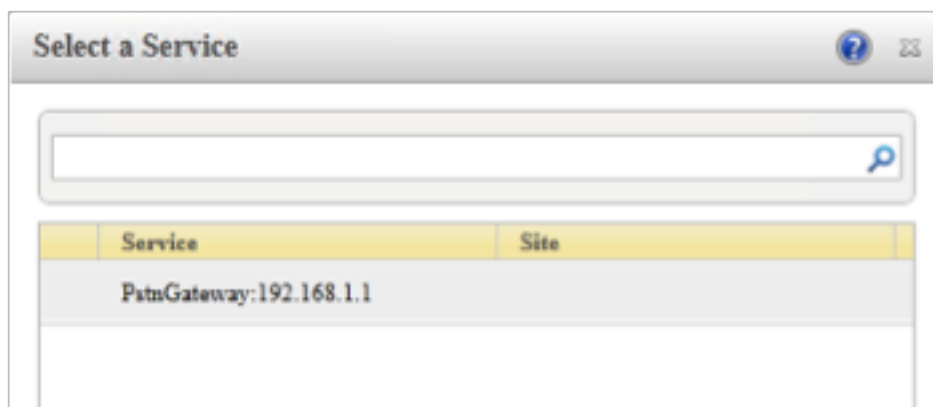


## Lync Control Panel

1. Open the Lync server Control Panel on a Front-End and go to 'Voice Routing - Trunk Configuration'



2. Click on 'New' and create a 'Pool Trunk'
3. In the next screen, select the newly created PSTN-Gateway



4. Configure the following trunk options:
  - Encryption Support Level: Not supported
  - Refer Support: None
  - Leave the other options on default

New Trunk Configuration - PstnGateway:192.168.1.1

Scope: Pool

Name: +

PstnGateway:192.168.1.1

Description:

Maximum early dialogs supported:

20

Encryption support level:

Not supported

Refer support:

None

Enable media bypass  
 Centralized media processing  
 Enable RTP latching  
 Enable forward call history  
 Enable forward P-Asserted-Identity data  
 Enable outbound routing failover timer

5. Create the following 'Calling number translation rule':

Associated translation rules

Calling number translation rules

Translation rule	State	Pattern to match	Translation pattern
Binnenkomend	Committed	^00(\d{17})\d+\$	+31\$1

6. Commit the trunk configuration

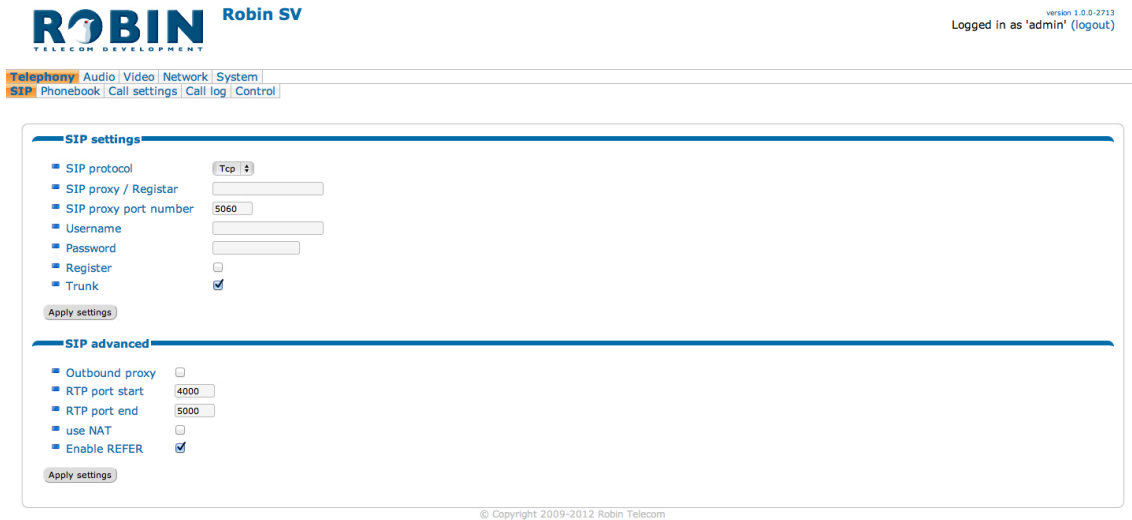
**! Note – The Lync event log will display gateway down entries. These can be ignored. (The Robin Intercom won't answer to messages from Lync).**

**Open the Topology Builder and choose 'Download Topology from existing deployment'. Store this file. !**



## Configuration of the Robin

1. Log into the Robin and access the page -Telephony-SIP-
2. Change the SIP protocol from 'UDP' to TCP



ROBIN Robin SV  
TELECOM DEVELOPMENT

version 1.0.0-2713  
Logged in as 'admin' (logout)

Telephony Audio Video Network System  
SIP Phonebook Call settings Call log Control

**SIP settings**

- SIP protocol: Tcp
- SIP proxy / Registrar:
- SIP proxy port number: 5060
- Username:
- Password:
- Register:
- Trunk:

Apply settings

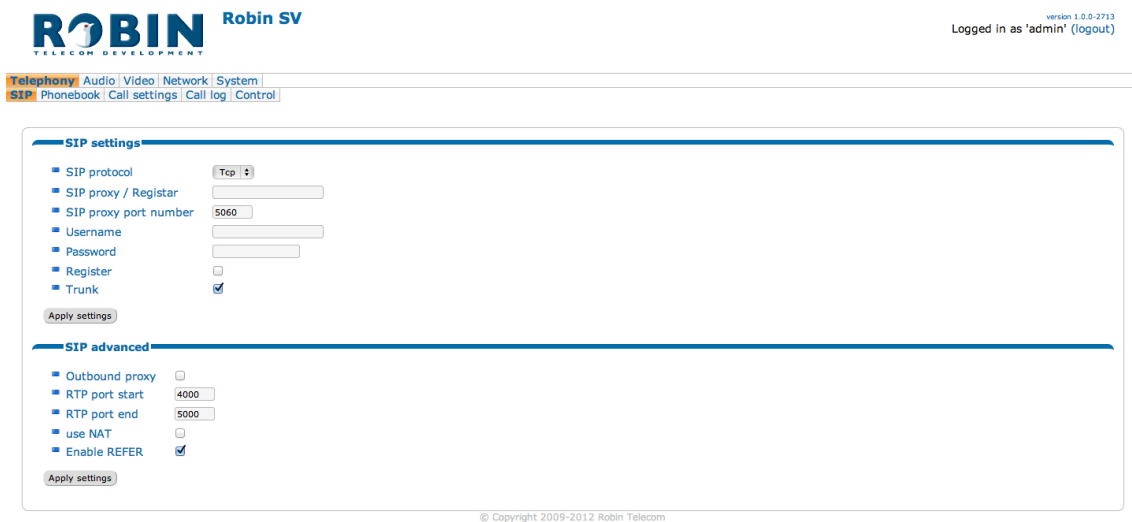
**SIP advanced**

- Outbound proxy:
- RTP port start: 4000
- RTP port end: 5000
- use NAT:
- Enable REFER:

Apply settings

© Copyright 2009-2012 Robin Telecom

3. Enable 'Trunk'



ROBIN Robin SV  
TELECOM DEVELOPMENT

version 1.0.0-2713  
Logged in as 'admin' (logout)

Telephony Audio Video Network System  
SIP Phonebook Call settings Call log Control

**SIP settings**

- SIP protocol: Tcp
- SIP proxy / Registrar:
- SIP proxy port number: 5060
- Username:
- Password:
- Register:
- Trunk:

Apply settings

**SIP advanced**

- Outbound proxy:
- RTP port start: 4000
- RTP port end: 5000
- use NAT:
- Enable REFER:

Apply settings

© Copyright 2009-2012 Robin Telecom

4. At 'SIP proxy / Registrar', fill in the IP address of the MS Lync server
5. At 'Username'. fill in the username associated with the Trunk / Robin
6. A password is usually not necessary

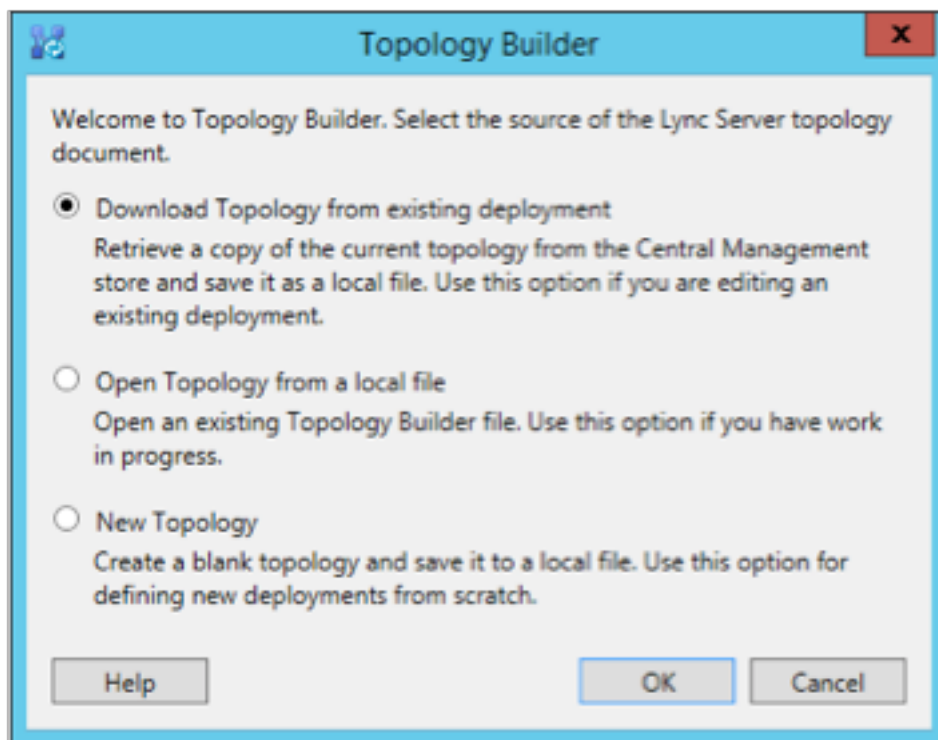
The connection between the Robin and MS Lync is now established. Continue the configuration of the Robin as described in the manual that came with the Robin.

## Configuration 2 - Advanced Lync setup

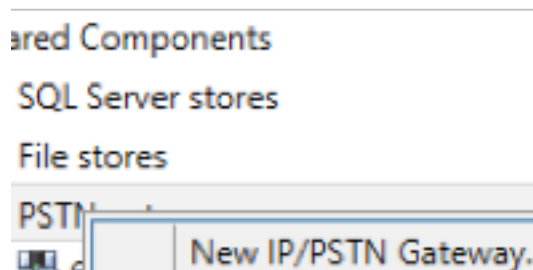
When a separate Mediation Server is used, some extra configuration on both the Lync environment and the Robin is necessary.

### Lync configuration

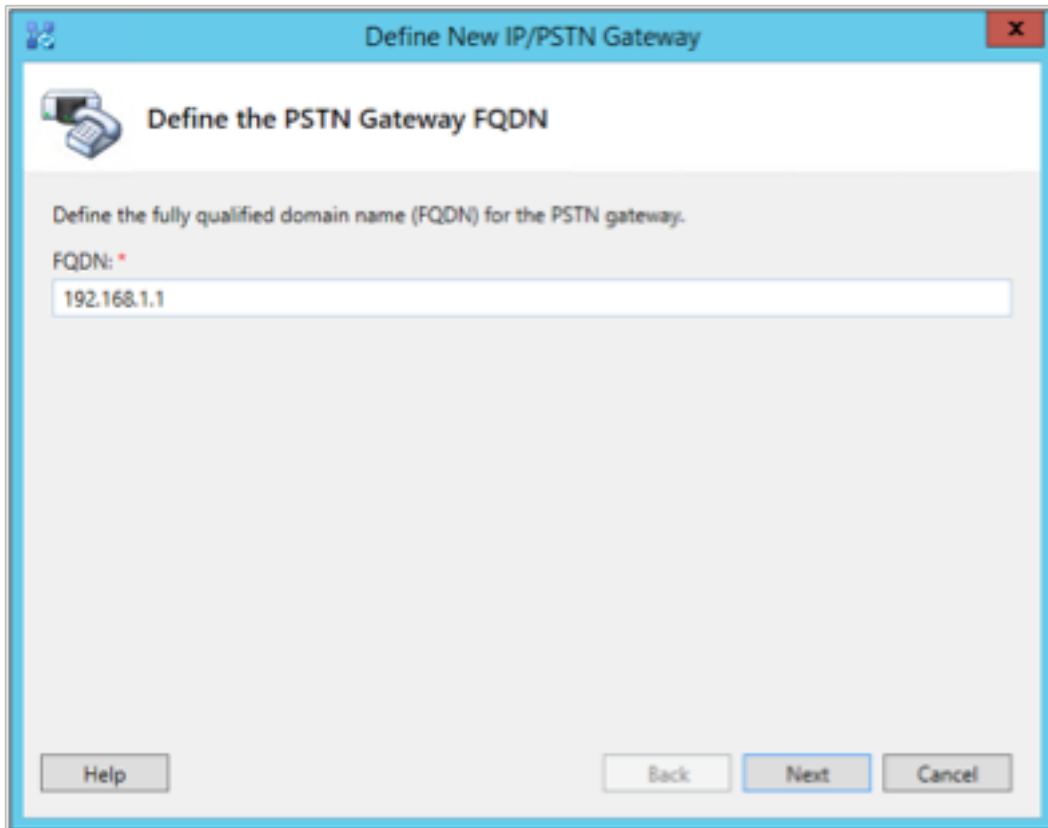
7. Open the Topology Builder and select 'Download Topology from existing deployment'. Save this file.



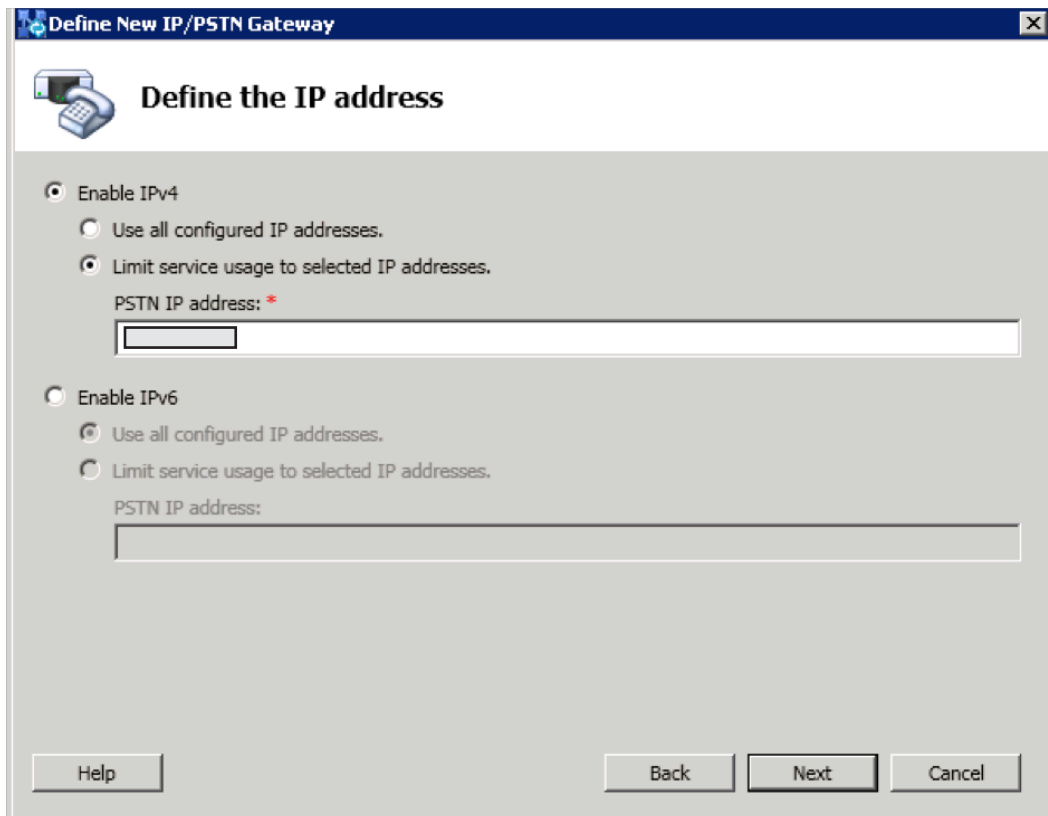
8. In the Topology builder, unfold 'Shared Components' right-click on 'PSTN gateways', select: 'New IP/PSTN gateway'.



9. As FQDN, use the IP address of the Robin

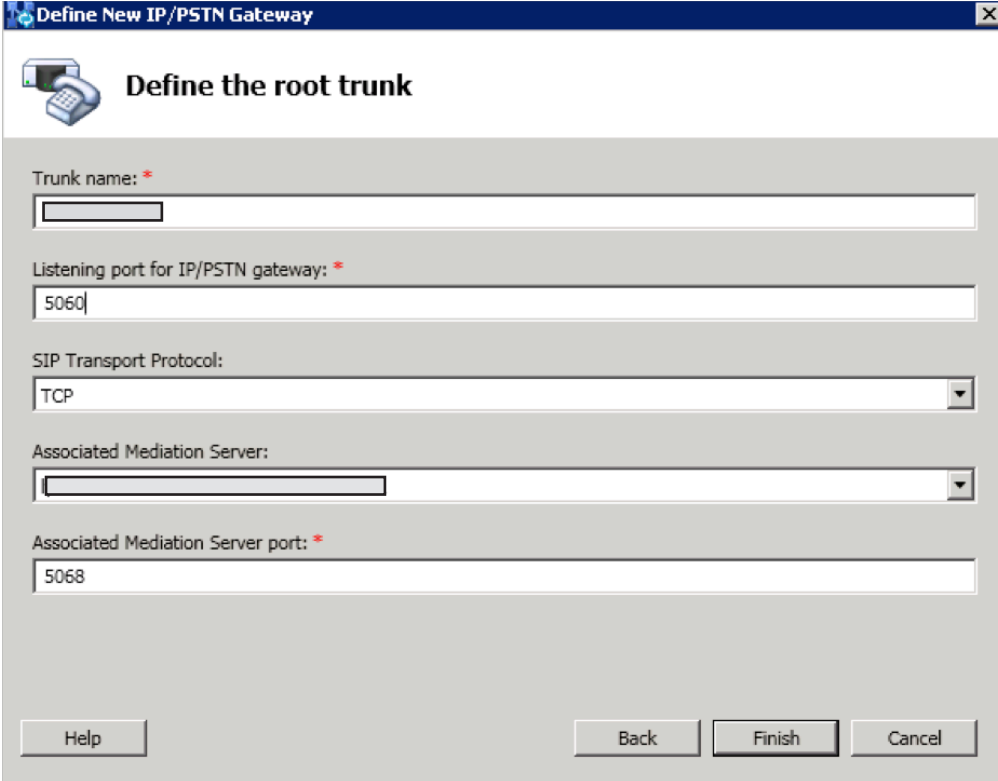


10. In the next screen, limit the service usage to the IP address of the Mediation Server



11. In the next screen, use the following settings:

- Trunkname: IP address of the Robin
- Listening port for the IP/PSTN gateway: 5060
- SIP Transport Protocol: TCP
- Associated Mediation server: Mediation server/pool (When using co-located mediation services, choose the front-end server/pool)
- Associated Mediation Server port: <select the listening port of the Mediation server, this example 5068>



**Define New IP/PSTN Gateway**

**Define the root trunk**

Trunk name: \*

Listening port for IP/PSTN gateway: \*

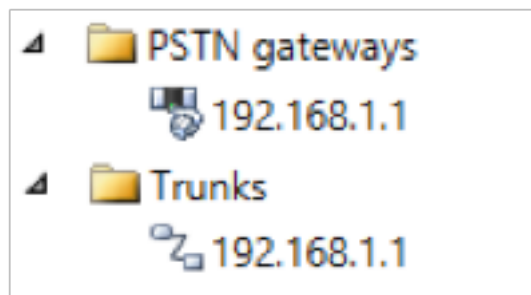
SIP Transport Protocol:

Associated Mediation Server:

Associated Mediation Server port: \*

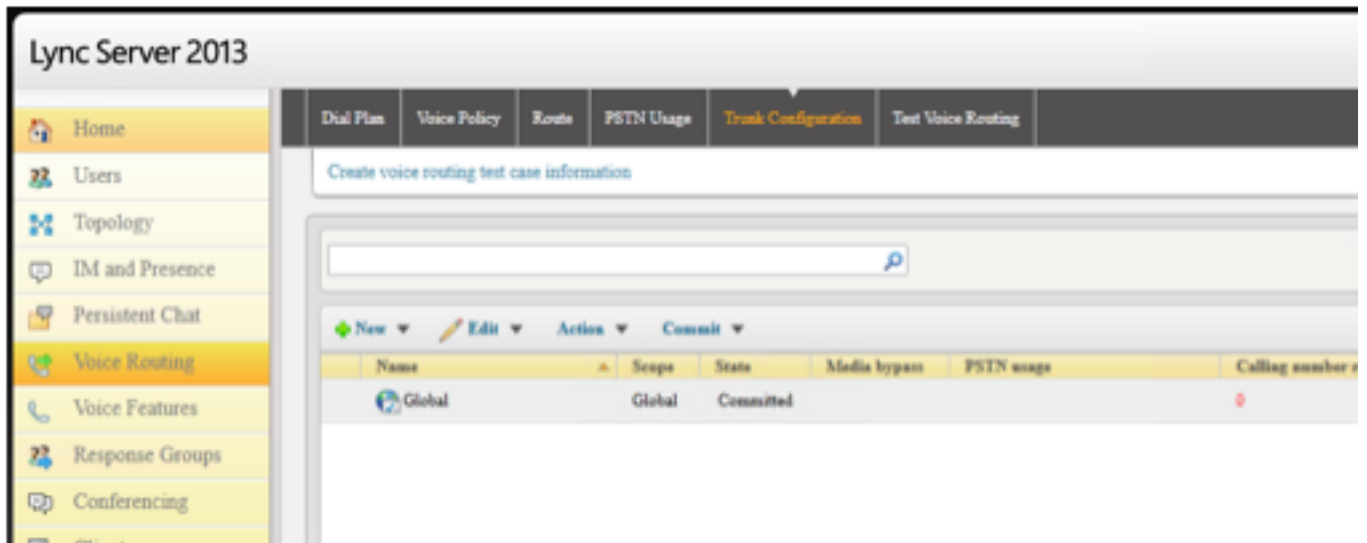
Help Back Finish Cancel

12. Click 'Finish'. The config is stored in the topology, next: publish the Topology.

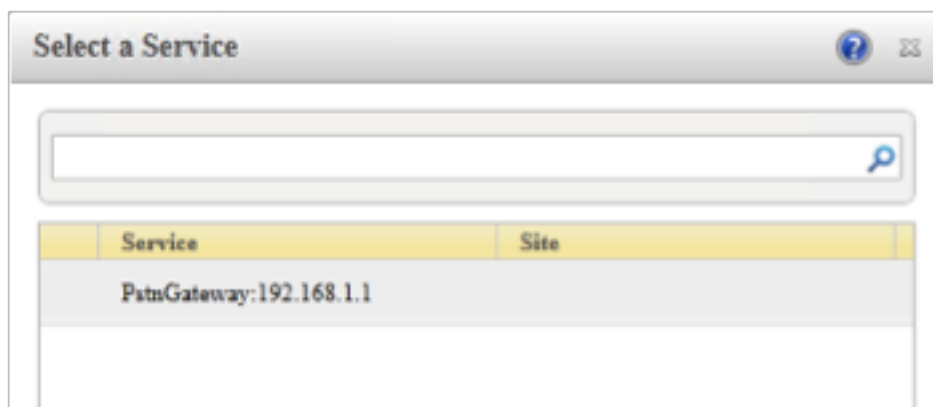


## Lync Control Panel

1. Open the Lync server Control Panel on a Front-End and go to 'Voice Routing - Trunk Configuration'



2. Click on 'New' and create a 'Pool Trunk'
3. In the next screen, select the newly created PSTN-Gateway



4. Configure the following trunk options:
  - Encryption Support Level: Not supported
  - Refer Support: None
  - Disable Outbound routing failover timer

5. Create the following 'Calling number translation rule':

Translation rule	State	Pattern to match	Translation p
------------------	-------	------------------	---------------

6. Commit the trunk configuration

**! Note 1 – The Lync event log will display gateway down entries. These can be ignored. (The Robin Intercom won't answer to messages from Lync).**

**Open the Topology Builder and choose 'Download Topology from existing deployment'. Store this file. !**

**! Note 2 – If the server has two network interface cards, create a static route to the Trunk of the Robin !**

## Configuration of the Robin

1. Log into the Robin and access the page -Telephony-SIP-
2. Change the SIP protocol from 'UDP' to TCP

ROBIN Robin SV version 1.0.0-2713  
Logged in as 'admin' (logout)

Telephony Audio Video Network System  
SIP Phonebook Call settings Call log Control

**SIP settings**

- SIP protocol
- SIP proxy / Registrar
- SIP proxy port number
- Username
- Password
- Register
- Trunk

**SIP advanced**

- Outbound proxy
- RTP port start
- RTP port end
- use NAT
- Enable REFER

© Copyright 2009-2012 Robin Telecom

3. Enable 'Trunk'

ROBIN Robin SV version 1.0.0-2713  
Logged in as 'admin' (logout)

Telephony Audio Video Network System  
SIP Phonebook Call settings Call log Control

**SIP settings**

- SIP protocol
- SIP proxy / Registrar
- SIP proxy port number
- Username
- Password
- Register
- Trunk

**SIP advanced**

- Outbound proxy
- RTP port start
- RTP port end
- use NAT
- Enable REFER

4. At 'SIP proxy / Registrar', fill in the IP address of the MS Lync server
5. At 'Username'. fill in the username associated with the Trunk / Robin
6. A password is usually not necessary
7. At SIP advanced, enable the use of an Outbound Proxy. Use the (same) IP address of the Mediation server, but change the port to the listening port of the Mediation server (in this case 5068)

**SIP advanced**

- Outbound proxy
- Outbound proxy host
- Outbound proxy port

The connection between the Robin and MS Lync is now established. Continue the configuration of the Robin as described in the manual that came with the Robin.

***! Note 1 – Use the following notation when adding phone numbers to the phonebook in the Robin: +31xxxxxxxx@<domain of customer> where the +31 can be changed in any Country access code. !***

***! Note 2 – Calling to outside numbers isn't possible because no Inter Trunk Routes are created (see: [https://technet.microsoft.com/en-us/library/jj205272\(v=ocs.15\).aspx](https://technet.microsoft.com/en-us/library/jj205272(v=ocs.15).aspx) !***